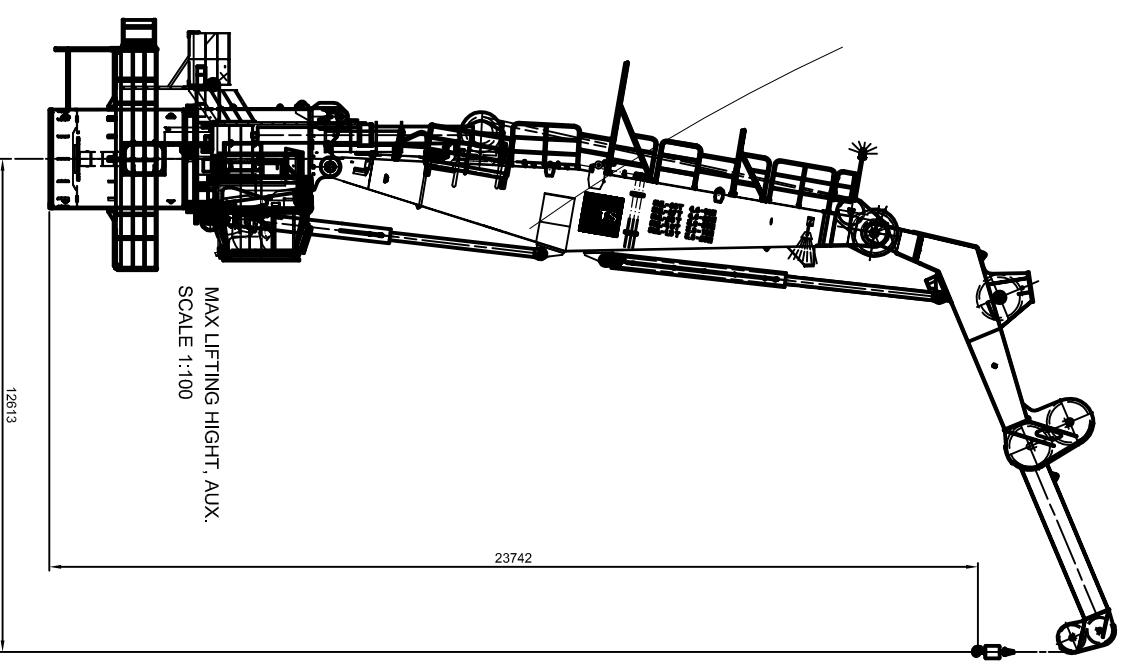


|                        |            |
|------------------------|------------|
| <b>AUX. HOOK</b>       |            |
| SWL LOAD:              | 15T-23M    |
| LIFTING HEIGHT:        | 100M       |
| HOOK SPEED SWL:        | 0-50M/Min  |
| HOOK SPEED LIGHT LOAD: | 0-100M/Min |

|                  |           |
|------------------|-----------|
| <b>MAIN HOOK</b> |           |
| LIGHT LOAD:      | 24T-20M   |
| HOOK SPEED:      | 0-50M/Min |
| SWL LOAD:        | 60T-9M    |
| HOOK SPEED:      | 0-21M/Min |
| LIFTING HEIGHT:  | 2000M     |



THE DRAWING AND THE DESIGN ARE THE PROPERTY OF TTS MARINE CRANES AS AND SHALL NOT BE USED AND REPRODUCED WITHOUT OUR WRITTEN CONSENT

PROJ: 04/02/11/PSL

DATE: 04/02/11/PSL

DESIGNER: AT

SCALE: 150

REV: 1

15518-G01

COLKO 1250-60-23

TTS  
TTS Marine Cranes AS